



Pipe element (Special)

Fitting pilot pipe

Unions - stock list

Feature		Part no.	Series	Pipe o.d.	Weight kg (lbs)
G - Union 	G 06-PL A3C	125920	L PN315	06	0.034 (0.07)
	G 10-PL A3C	125943		10	0.062 (0.14)
	G 15-PL A3C	125931		15	0.138 (0.3)
SV - Bulkhead union 	SV 06-L CF	822900	L PN315	06	0.064 (0.14)
	SV 10-PL Ms	822893		10	0.114 (0.25)
	SV 10-PL A3C	212010		10	0.106 (0.23)
W - Elbow union 	W 06-PL A3C	125797	L PN315	06	0.052 (0.11)
	W 10-PL A3C	174678		10	0.096 (0.21)
	W 15-PL A3C	125815		15	0.160 (0.35)
T - Union tee 	T 06-PL A3C	125633	L PN315	06	0.070 (0.15)
	T 10-PL A3C	125645		10	0.126 (0.28)
	T 15-PL A3C	125669		15	0.230 (0.51)
K - Union cross 	K 10-PL A3C	841744	L PN315	10	0.134 (0.3)
RHD - Non-return valve 	RHD 06-PL	125980	L PN250	06	0.068 (0.15)
	RHD 10-PL	125992		10	0.142 (0.31)
MAV - Pressure gauge connector 	MAV 06-PLR A3C	126054	L PN315	06	0.046 (0.1)
	MAV 10-PSR A3C	126078	S PN630	10	0.120 (0.26)
GE - Male stud connector 	GE 06-PLR-ED A3C	125566	L PN315	06	0.026 (0.06)
	GE 10-PLR-ED A3C	174666		10	0.048 (0.11)
	GE 15-PLR-ED A3C	125610		15	0.116 (0.26)
	GE 06-PSR-ED A3C	125578	S PN630	06	0.054 (0.12)
	GE 10-PSR-ED A3C	125608		10	0.088 (0.19)



Pipe element (Special)

Fitting pilot pipe

Unions - stock list

Feature		Part no.	Series	Pipe o.d.	Weight kg (lbs)
EVGE - Swivel connector 	EVGE 10-PLR-ED A3C	841732	L	10	0.047 (0.1)
	EVGE 15-PLR-ED A3C	886237	PN250	15	0.123 (0.27)
WE - Male stud elbow 	WE 06-PLR A3C	125761	L PN315	06	0.040 (0.09)
	WE 10-PLR A3C	125750		10	0.082 (0.18)
	WE 15-PLR Ms-DPR	840752		15	0.150 (0.33)
	WE 06-PSR A3C	125773	S PN400	06	0.074 (0.16)
TE - Male stud branch 	TE 15-PLR A3C	814971	L PN315	15	0.200 (0.44)
LE - Male stud run tee 	LE 06-PLR A3C	125876	L PN315	06	0.051 (0.11)
EVW - Standpipe elbow 	EVW 15-PL A3C	886238	L PN315	15	0.165 (0.36)
EVT - Standpipe branch tee 	EVT 06-S A3C	886406	S PN630	06	0.102 (0.22)
EVL - Standpipe run tee 	EVL 06-PL A3C	786956	L PN315	06	0.058 (0.13)
M - Nut 	M 06-L A3C	173959	L	06	0.010 (0.020)
	M 10-L A3C	126133		10	0.016 (0.04)
	M 15-L Ms	861820		15	0.045 (0.1)
	M 06-S A3C	829656	S	06	0.017 (0.04)



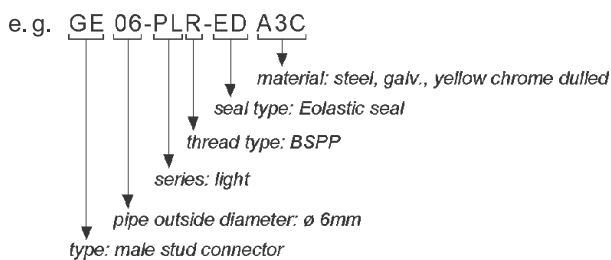
Pipe element (Special)

Fitting pilot pipe

Unions - stock list

Feature		Part no.	Series	Pipe o.d.	Weight kg (lbs)
DPR - Progressive ring 	DPR 06-L/S A3D	208208	L/S	06	0.002 (0.0044)
	DPR 10-L/S A3D	126091		10	0.002 (0.0044)
VKA - Blanking plug for cones 	VKA 06-L A3C	885373	L	06	0.005 (0.001)
	VKA 10-L A3C	815008		PN315	0.014 (0.0031)
	VKA 15-L A3C	814983		15	0.030 (0.07)
VSTI - Blanking plug for ports 	VSTI R1/4-ED A3C	776387	PN400	-	0.018 (0.04)
	VSTI R1/2-ED A3C	774822		-	0.045 (0.1)
RI - Thread reducer/expander 	RI 1/2 x 3/4 CF	751060	PN400	-	0.180 (0.4)
	RI 1/2 x 1 A3C	704059		-	0.164 (0.36)
KOR - Tube end reducer 	KOR 08/06-PL A3C	886263	L PN315	08/06	0.039 (0.09)
	KOR 10/06-PL A3C	755260		10/06	0.044 (0.1)
	KOR 15/10-PL A3C	755259		15/10	0.088 (0.19)
EDKOR - Straight reducer connection with taper 	EDKOR 10L/15L A3C	886612	L PN400	10/15	0.094 (0.21)

Explanation Feature



Series Llight
 Sheavy
 Material A3Csteel, galvanized, yellow chrome dulled
 A3Dsteel, galvanized, green chrome dulled
 CFsteel galvanized Cr(VI)-free
 Msbrass



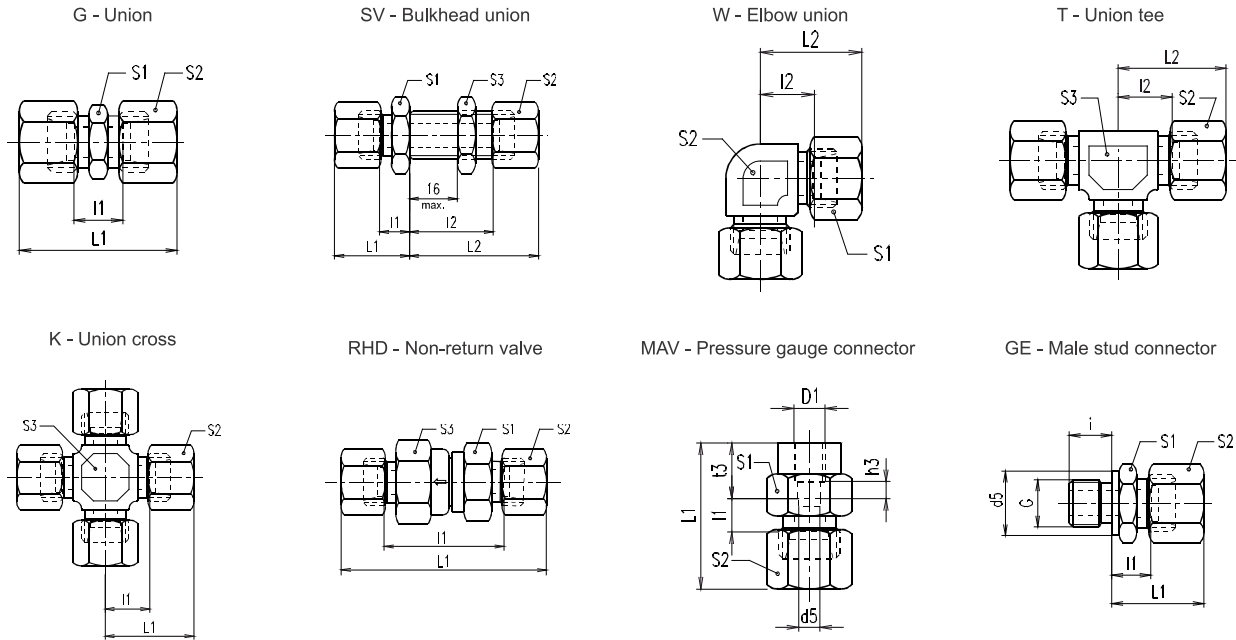
Pipe element (Special)

Fitting pilot pipe

Unions - stock list

Dimension drawing

Dimensions in mm (inch)



Feature	S1	S2	S3	L1	I1	L2	I2
G 06-PL A3C	12 (0.47)	14 (0.55)	-	39 (1.54)	10 (0.39)	-	-
G 10-PL A3C	17 (0.67)	19 (0.75)	-	42 (1.65)	13 (0.51)	-	-
G 15-PL A3C	24 (0.94)	27 (1.06)	-	46 (1.81)	16 (0.63)	-	-
SV 06-L CF	17 (0.67)	14 (0.55)	17 (0.67)	22 (0.87)	7 (0.28)	42 (1.65)	27 (1.06)
SV 10-PL Ms	22 (0.87)	19 (0.75)	22 (0.87)	25 (0.98)	10 (0.39)	43 (1.69)	28 (1.10)
SV 10-PL A3C	22 (0.87)	19 (0.75)	22 (0.87)	25 (0.98)	10 (0.39)	43 (1.69)	28 (1.10)
W 06-PL A3C	14 (0.55)	12 (0.47)	-	-	-	27 (1.06)	12 (0.47)
W 10-PL A3C	19 (0.75)	17 (0.67)	-	-	-	30 (1.18)	15 (0.59)
W 15-PL A3C	27 (1.06)	19 (0.75)	-	-	-	36 (1.42)	21 (0.83)
T 06-PL A3C	-	14 (0.55)	12 (0.47)	-	-	27 (1.06)	12 (0.47)
T 10-PL A3C	-	19 (0.75)	17 (0.67)	-	-	30 (1.18)	15 (0.59)
T 15-PL A3C	-	27 (1.06)	19 (0.75)	-	-	36 (1.42)	21 (0.83)

Feature	S1	S2	L1	S3/ D1	I1/d1	t3/G	h3/i	d5
K 10-PL A3C	-	19 (0.75)	30 (1.18)	14 (0.55)	15 (0.59)	-	-	-
RHD 06-PL	17 (0.67)	24 (0.94)	58 (2.28)	17 (0.67)	29 (1.14)	-	-	-
RHD 10-PL	22 (0.87)	19 (0.75)	69.5 (2.74)	24 (0.94)	40.5 (1.59)	-	-	-
MAV 06-PLR A3C	19 (0.75)	14 (0.55)	37 (1.46)	G1/4	7.5 (0.3)	14.5 (0.57)	4.5 (0.18)	2.5 (0.1)
MAV 10-PSR A3C	27 (1.06)	22 (0.87)	47 (1.85)	G1/2	10.5 (0.41)	20 (0.79)	5 (0.197)	7.0 (0.28)
GE 06-PLR-ED A3C	14 (0.55)	14 (0.55)	23 (0.91)	-	8.5 (0.33)	G1/8	8 (0.31)	14 (0.55)
GE 10-PLR-ED A3C	19 (0.75)	19 (0.75)	26 (1.02)	-	11 (0.43)	G1/4	12 (0.47)	19 (0.75)
GE 15-PLR-ED A3C	27 (1.06)	27 (1.06)	29 (1.14)	-	14 (0.55)	G1/2	14 (0.55)	27 (1.06)
GE 06-PSR-ED A3C	19 (0.75)	17 (0.67)	-	28 (1.10)	-	-	-	-
GE 10-PSR-ED A3C	22 (0.87)	22 (0.87)	-	31 (1.22)	-	-	-	-

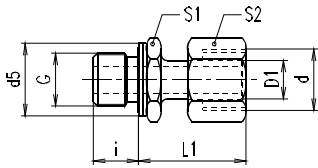


Pipe element (Special)

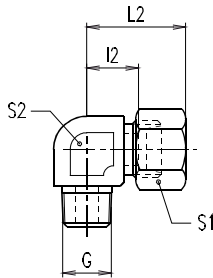
Fitting pilot pipe

Unions - stock list

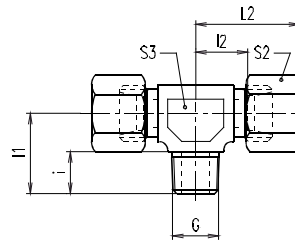
EVGE - Swivel connector



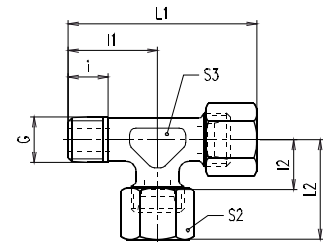
WE - Male stud elbow



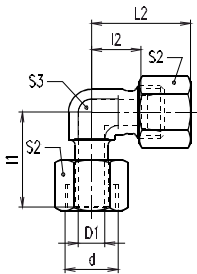
TE - Male stud branch



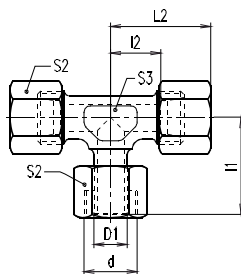
LE - Male stud run tee



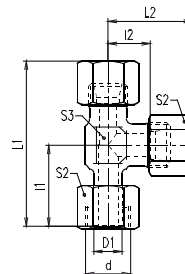
EVW - Standpipe elbow



EVT - Standpipe branch tee



EVL - Standpipe run tee



Feature	S1	S2	L1	S3 /D1	t3/G	h3/i	d5
EVGE 10-PLR-ED A3C	19 (0.75)	19 (0.75)	27.5 (1.08)	10 (0.39)	G1/4	12 (0.47)	19 (0.75)
EVGE 15-PLR-ED A3C	27 (1.06)	27 (1.06)	31 (1.22)	15 (0.59)	G1/2	14 (0.55)	27 (1.06)

Feature	S1	S2	S3	L1	l1	L2	l2	G/D1	i/d1
WE 06-PLR A3C	14 (0.55)	12 (0.47)	-	-	-	27 (1.06)	12 (0.47)	R1/8	-
WE 10-PLR A3C	19 (0.75)	17 (0.67)	-	-	-	30 (1.18)	15 (0.59)	R1/4	-
WE 15-PLR Ms-DPR	27 (1.06)	19 (0.75)	-	-	-	36 (1.42)	21 (0.83)	R1/2	-
WE 06-PSR A3C	17 (0.67)	14 (0.55)	-	-	-	31 (1.22)	16 (0.63)	R1/4	-
TE 15-PLR A3C	-	27 (1.06)	19 (0.75)	-	34 (1.34)	36 (1.42)	21 (0.83)	R1/2	14 (0.55)
LE 06-PLR A3C	-	14 (0.55)	12 (0.47)	47 (1.85)	20 (0.78)	27 (1.06)	12 (0.47)	R1/8	8 (0.31)
EVW 15-PL A3C	-	27 (1.06)	19 (0.75)	-	32,5 (1.28)	36 (1.42)	21 (0.83)	15 (0.59)	-
EVT 06-S A3C	-	17 (0.67)	12 (0.47)	-	27 (1.06)	31 (1.22)	16 (0.63)	6 (0.24)	-
EVL 06-PL A3C	-	14 (0.55)	12 (0.47)	53 (2.09)	26 (1.02)	27 (1.06)	12 (0.47)	6 (0.24)	-
M 06-L A3C	-	14 (0.55)	-	-	-	-	-	-	-
M 10-L A3C	-	19 (0.75)	-	-	-	-	-	-	-
M 15-L Ms	-	27 (1.06)	-	-	-	-	-	-	-
M 06-S A3C	-	17 (0.67)	-	-	-	-	-	-	-

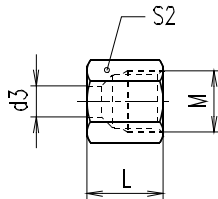


Pipe element (Special)

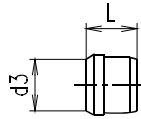
Fitting pilot pipe

Unions - stock list

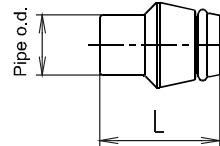
M - Nut



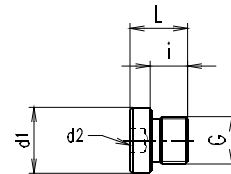
DPR - Progressive ring



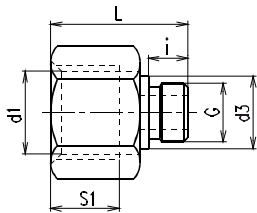
VKA - Blanking plug for cones



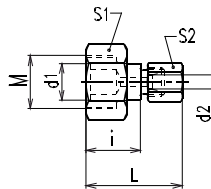
VSTI - Blanking plug for ports



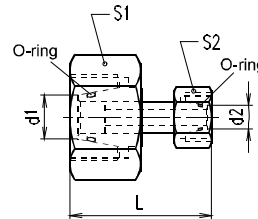
RI - Thread reducer/expander



KOR - Tube end reducer



EDKOR - Straight reducer connection with taper



Feature	S1	S2	M/G	i	L	d1	d2	d3
M 06-L A3C	-	14 (0.55)	M12x1,5	-	9.5 (0.37)	-	-	6 (0.24)
M 10-L A3C	-	19 (0.75)	M16x1,5	-	10 (0.39)	-	-	10 (0.39)
M 15-L Ms	-	27 (1.06)	M22x1,5	-	10 (0.39)	-	-	15 (0.59)
M 06-S A3C	-	17 (0.67)	M14x1,5	-	9.5 (0.37)	-	-	6 (0.24)
DPR 06-L/S A3D	-	-	-	-	9.5 (0.37)	-	-	6 (0.24)
DPR 10-L/S A3D	-	-	-	-	10 (0.39)	-	-	10 (0.39)
VKA 06-L A3C	-	-	-	-	18.5 (0.73)	-	-	-
VKA 10-L A3C	-	-	-	-	20 (0.79)	-	-	-
VKA 15-L A3C	-	-	-	-	20.5 (0.81)	-	-	-
VSTI R1/4-ED A3C	-	-	G1/4 A	12 (0.47)	17 (0.67)	19 (0.75)	6 (0.24)	-
VSTI R1/2-ED A3C	-	-	G1/2 A	14 (0.55)	19 (0.75)	27 (1.06)	10 (0.39)	-
RI 1/2 x 3/4 CF	24.5 (0.96)	-	G1/2 A	14 (0.55)	46 (1.81)	G3/4	-	26 (1.02)
RI 1/2 x 1 A3C	26.5 (1.04)	-	G1/2 A	14 (0.55)	49 (1.93)	G1	-	26 (1.02)
KOR 08/06-PL A3C	17 (0.67)	14 (0.55)	M14x1,5	23.5 (0.93)	38 (1.5)	8 (0.31)	6 (0.24)	-
KOR 10/06-PL A3C	19 (0.75)	14 (0.55)	M16x1,5	23.5 (0.93)	38 (1.5)	10 (0.39)	6 (0.24)	-
KOR 15/10-PL A3C	27 (1.06)	19 (0.75)	M22x1,5	24.5 (0.96)	39 (1.54)	15 (0.59)	10 (0.39)	-
EDKOR 10L/15L A3C	27 (1.06)	19 (0.75)	-	-	~36 (~1.42)	15 (0.59)	10 (0.39)	-