



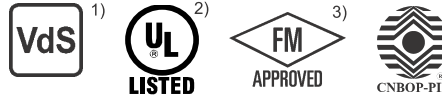
Inert gas extinguishing technology

Control device

Safety device malfunction pressure SFD DN4 300



Approvals



- 1) Part of the system approval:
 - Oxeo inert gas extinguishing system HD300 (S316003)
 - Oxeo inert gas extinguishing system with ConstantFlow HD300 (S316001)
 - Oxeo inert gas extinguishing system type "Oxeo CF LCP" (S322012)
 - Oxeo inert gas extinguishing system type "Oxeo PR LCP" (S321009)
 - CO₂ extinguishing system HD-1 (S316007)
 - CO₂ extinguishing system CO₂ HP LCP (S320008)
- 2) Listed system:
 - Oxeo PR LCP: IG-01, IG-100 (UL-File EX26532)
 - Oxeo CF LCP: IG-01, IG-100, IG-541 (UL-File EX26532)
 - CO₂ and CO₂ HP LCP (UL-File EX27301)
- 3) Part of the system approval:
 - Oxeo PR LCP: IG-01, IG-100 (FM23FPUS0031)
 - Oxeo CF LCP: IG-01, IG-100, IG-541 (FM23FPUS0179)
 - CO₂ HP LCP (FM23FPUS0180)

SAP designation

part no. 912435: Safety device malfunct. pressure SFD 300

Maintenance

see technical description safety device malfunction pressure SFD 300 / LCP part no. 912453

Designation	Part no.	Weight
Safety device malfunction pressure SFD DN4 300	912435	0.15 kg (0.33 lbs)

Technical data

Operating mediumargon (IG-01), nitrogen (IG-100),
IG-55, IG-541, carbon dioxide (CO₂) / gaseous,
HFC 227 ea, FK 5-1-12
 Working pressure.....365 bar (5294 psi)
 Test pressure548 bar (7948 psi)
 Temperature range-20 °C to +50 °C (-4 °F to +122 °F)
 Connection DN4pipe 6 x 1
 Installation positionvertical, see page 2/2

Material / Surface

Housingbrass
 GasketNBR
 Ball1.4301

Marking

working pressure (PB 365), nominal diameter (DN4), manufacturer (MX), type (SFD 300), serial number

Application

The safety device malfunction pressure is used in accordance with the project-specific system schema in fixed fire extinguishing systems. The safety device malfunction pressure is intended only for releasing small amounts of leakage in pneumatic pilot lines. The safety device closes automatically on higher pressure.

Note

The safety device malfunction pressure **has to be** installed upright into the pilot lines as well an installation nearby a potential leakage (e.g. pilot gas tank) is recommended.

Included in delivery

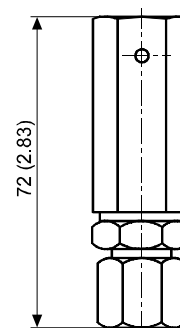
Safety device malfunction pressure SFD DN4 300
 Technical description safety device malfunction pressure SFD 300 / LCP part no. 912437 (de) and part no. 912453 (en)

Not included in delivery

Unions and pipe for extinguishing pipework and pilot pipes see page 2/2

Dimension drawing

Dimensions in mm (inch)



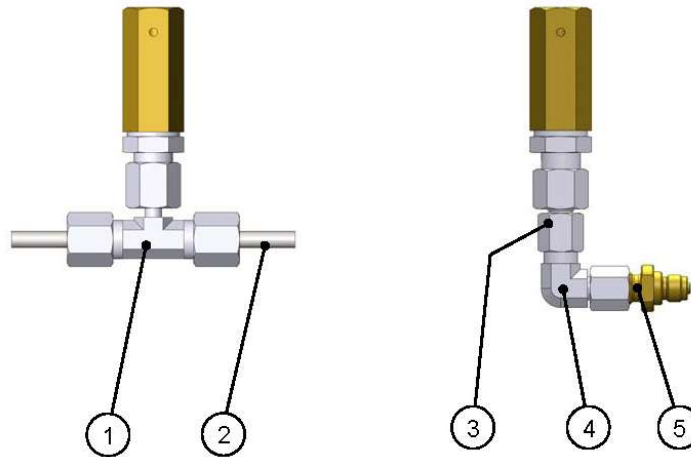


Inert gas extinguishing technology

Control device

Safety device malfunction pressure SFD DN4 300

Installations examples



Not included in delivery

- Item 1: Union EVT 06 SA3Cpart no. 886406
- Item 2: Pipe 6 x 1 mm (0.236 x 0.039 inch)
- Item 3: Union GZR06L/06SCFpart no. 910650
- Item 4: Union EW 06 L CFpart no. 889145
- Item 5: Adapter M12x1.5 – G1/8part no. 887644
(for release device pneumatic or pneumatic/manual)